

Gelled Silica technology for superior performance. Valve regulated, spill proof construction allows safe operation in any position. Approved for transport by air. D.O.T., I.A.T.A., F.A.A. and C.A.B. certified. U.L. recognized under file number MH 20567.

## Specification

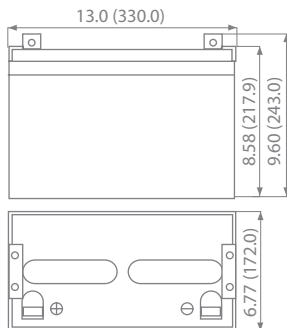
<b>Nominal Voltage</b>	12 volts		
<b>Nominal Capacity</b>	77° F (25° C)		
20-hr. (5.00A)	100 Ah		
10-hr. (9.30A)	93.0 Ah		
5-hr. (17.0A)	85.0 Ah		
1-hr. (60.0A)	60.0 Ah		
<b>Approximate Weight</b>	67.24 lbs (30.5 kgs)		
<b>Internal Resistance (approx.)</b>	5mΩ		
<b>Shelf Life (% of normal capacity at 68° F (20° C))</b>			
3 Months	6 Months	12 Months	
91%	83%	64%	
<b>Temperature Dependency of Capacity (20 hour rate)</b>			
104° F (40°C)	77° F (25°C)	32° F (0°C)	5° F (-15°C)
102%	100%	85%	65%
<b>GEL Operational Temperature</b>			
Charge	32°F to 104°F (0°C to 45°C)		
Discharge	5°F to 113°F (-15°C to 50°C)		
<b>GEL Storage Temperature</b>	5°F to 104°F (-15°C to 45°C)		



Due to continuous improvements to our products, product may vary slightly from depiction.

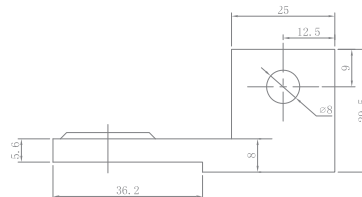
<b>Charge Method (Constant Voltage)</b>	
<b>Cycle Use (Repeating Use)</b>	
Initial Current	20.0 A or smaller
Control Voltage	14.2 - 14.4 V
<b>Float Use</b>	
Control Voltage	13.2 - 13.4 V

## Physical Dimensions: in (mm)

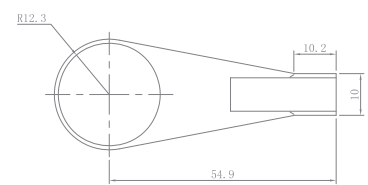


**L:** 13.0 in (330.0 mm)  
**W:** 6.77 in (172.0 mm)  
**H:** 8.58 in (217.9 mm)  
**TH:** 9.60 in (243.0 mm)  
 Tolerances are +/- 0.04 in. (+/- 1mm) and +/- 0.08 in. (+/- 2mm) for height dimensions. All data subject to change without notice.

### Terminals



### Flag Terminal (FL2)



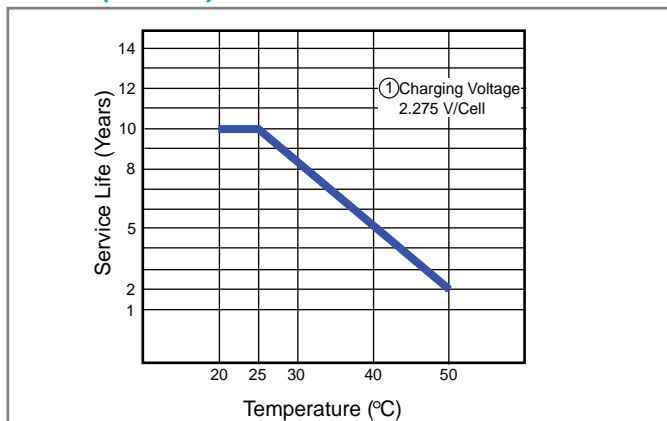
## Constant Current Discharge Characteristics Unit:A (25°C, 77°F)

F.V/Time	5MIN	10MIN	15MIN	30MIN	1HR	2HR	3HR	5HR	8HR	10HR	20HR
9.60	258.0	198.0	155.0	104.0	63.0	38.6	26.90	18.27	12.18	10.15	5.33
9.90	250.3	192.1	151.9	101.9	61.7	38.4	26.77	18.18	12.12	10.10	5.30
10.2	245.1	188.1	148.8	99.8	60.5	38.0	26.50	18.00	12.07	10.06	5.28
10.5	237.4	182.2	144.2	96.7	58.6	37.6	26.24	17.82	12.03	10.03	5.26
10.8	201.2	176.8	141.4	94.8	57.5	37.2	25.97	17.64	12.00	10.00	5.25

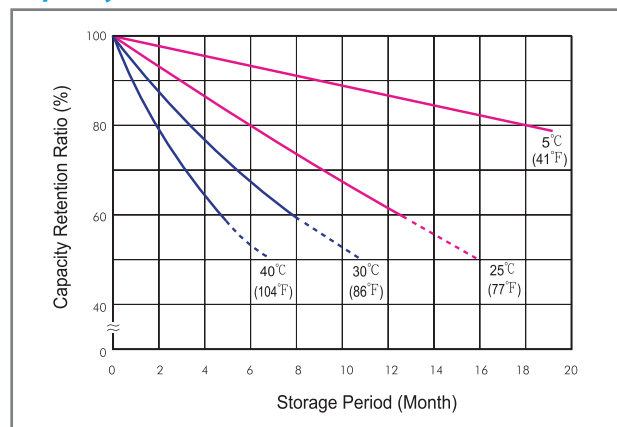
## Constant Power Discharge Characteristics Unit:W (25°C, 77°F)

F.V/Time	5MIN	10MIN	15MIN	30MIN	1HR	2HR	3HR	5HR	8HR	10HR	20HR
9.60	2709	2138	1702	1167	718	447	316	216.0	146.2	121.2	63.9
9.90	2628	2074	1668	1144	704	444	315	214.9	145.4	120.6	63.6
10.2	2574	2031	1634	1120	689	440	312	212.8	144.9	120.1	63.4
10.5	2492	1967	1583	1085	668	436	309	210.6	144.4	119.7	63.2
10.8	2113	1910	1552	1064	655	431	305	208.5	144.0	119.4	63.0

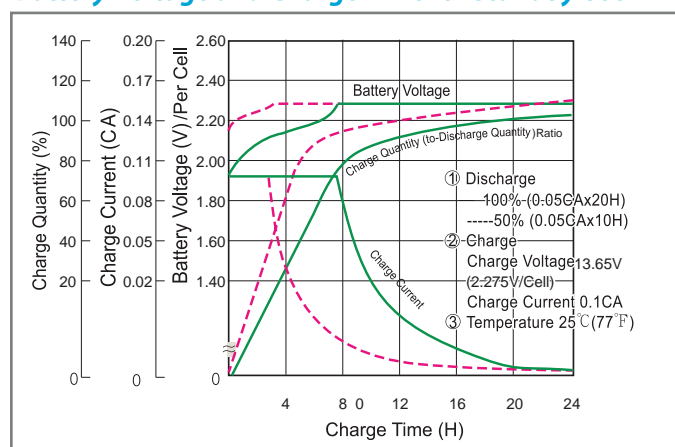
### Trickle (or Float) Service Life



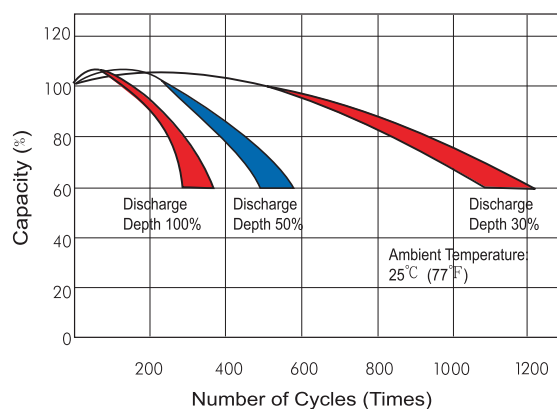
### Capacity Retention Characteristic



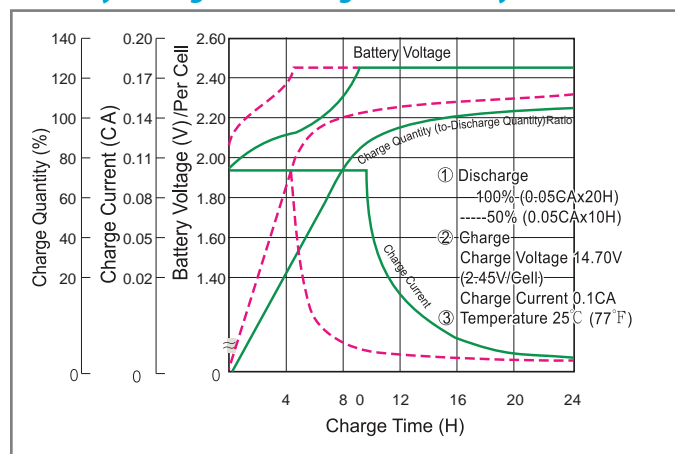
### Battery Voltage and Charge Time for Standby Use



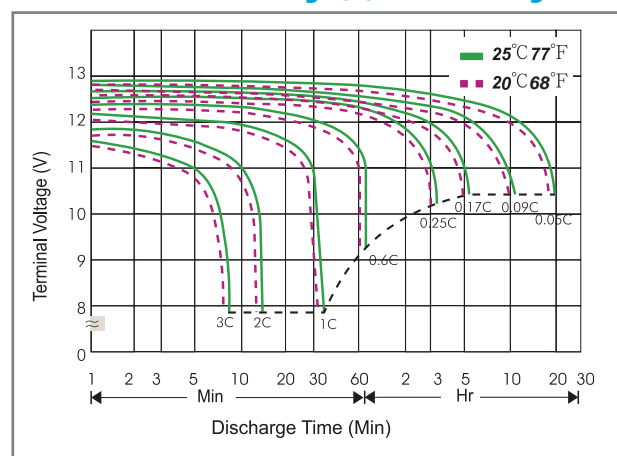
### Cycle Service Life



### Battery Voltage and Charge Time for Cycle Use



### Terminal Voltage (V) and Discharge Time



### Charge Current & Final Discharge Voltage

Application	Charge Voltage(V/Cell)			Max.Charge Current	Final Discharge Voltage V/Cell	Discharge Current(A)	1.75	1.70	1.65	1.60
	Temperature	Set Point	Allowable Range							
Cycle Use	25°C(77°F)	2.38	2.37~2.40	0.20C	1.75	0.2C>(A)	1.70	1.65	1.60	1.60
Standby	25°C(77°F)	2.22	2.20~2.23							



Let UPG Power Your Life.

www.upgi.com