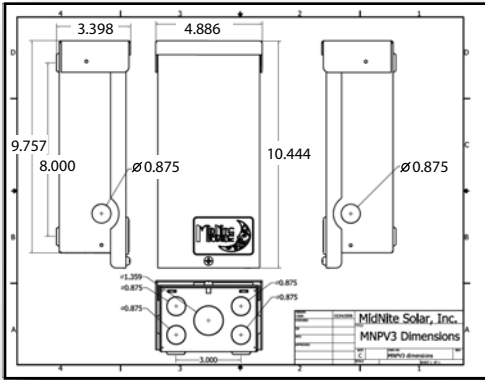


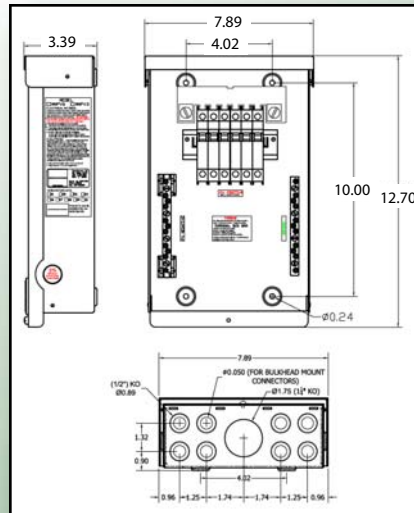
# PV Combiners



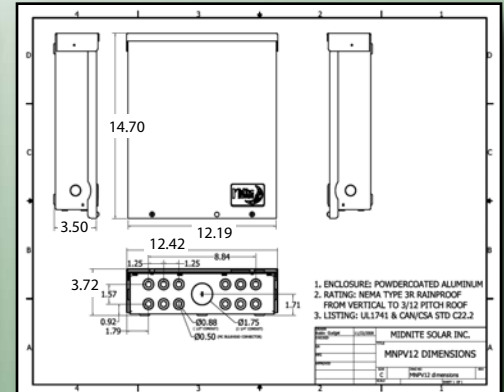
MidNite Solar offers a range of PV Combiners from our MNPV3 to the MNPV12v. This range of combiners accommodates PV systems as small as a two string off grid cabin up to 12 strings for a 50KW commercial grid tie inverter.



**MNPV2-MC4 and MNPV3**



**MNPV4-MC4, MNPV6 and MNPV6-250**



**MNPV8-MC4, MNPV12 and MNPV12-250**



**MidNite Solar PV Combiner Specifications**

	<b>MNPV2-MC4 and MNPV3</b>	<b>MNPV4-MC4, MNPV6 and MNPV6-250</b>	<b>MNPV8-MC4, MNPV12 and MNPV12-250</b>
<b>Enclosure rating</b>	Outdoor Rainproof NEMA 3R	Outdoor Rainproof NEMA 3R	Outdoor Rainproof NEMA 3R
<b>Enclosure material</b>	Powder coated aluminum with stainless hardware	Powder coated aluminum with stainless hardware	Powder coated aluminum with stainless hardware
<b>Mounting options and angle</b>	Vertical wall mount, pole mount or sloped roof mount to 14 degrees incline (3 in 12 roof pitch)	Vertical wall mount, pole mount or sloped roof mount to 14 degrees incline (3 in 12 roof pitch)	Vertical wall mount, pole mount or sloped roof mount to 14 degrees incline (3 in 12 roof pitch)
<b>Number of PV strings</b>	MNPV2-MC4 two strings, MNPV3 two strings with fuses, three strings with 150 volt breakers	MNPV4-MC4 four strings, MNPV6 four strings with fuses, six strings with 150 volt breakers, MNPV6-250 three strings with 300 volt breakers	MNPV8-MC4 four strings MNPV12 eight strings with fuses and twelve strings with 150 volt breakers MNPV12-250 six strings with 300 volt breakers
<b>Maximum number of output circuits</b>	1 for all	MNPV4-MC4 and MNPV6 is two, MNPV6-250 is one	2 for all
<b>Wire range for string input</b>	MNPV2-MC4 NA uses MC4 connectors, MNPV3 14-6 AWG	MNPV4-MC4 NA uses MC4 connectors MNPV6 and MNPV6-250 14-6 AWG	MNPV8-MC4 NA uses MC4 connectors MNPV12 and MNPV12-250 14-6 AWG
<b>Maximum OCPD rating</b>	30 amp with fuses and 63 amps with 150 volt breakers	30 amp with fuses, 63 amps with 150 volt breakers and 50 amps with 300 volt breakers	30 amp with fuses, 63 amps with 150 volt breakers and 50 amps with 300 volt breakers
<b>Maximum output amps</b>	60 amps for all	80 amps for fused, 120 amp for breakers	200 Amps with Fuses and 150 volt breakers, 168 amps with 300 volt breakers
<b>Output wire range</b>	14 to 1/0 AWG	14 to 1/0 AWG	14 to 1/0 AWG
<b>Lug temperature rating</b>	90 deg C	90 deg C	90 deg C
<b>Deadfront</b>	Custom molded plastic deadfront	Custom molded plastic deadfront	Custom molded plastic deadfront
<b>Lockable</b>	Yes	Yes	Yes
<b>Rating</b>	UL1741	UL1741	UL1741